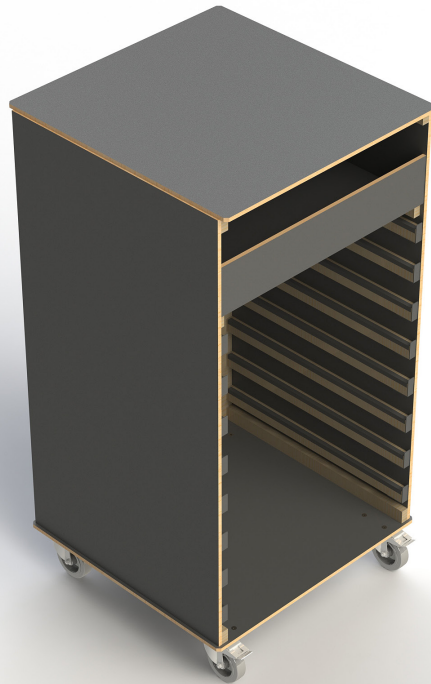


trolley to store and transport your VENTA products

VENTA<sup>®</sup>  
BY BÜCHIN DESIGN



**Item No.: 99160**

[LxWxH]: 820 x 790 x 1579 mm  
total weight: 70 kg

**Trolley**

suitable for: metal housing & induction unit  
material: multi-layer-wood, 12 mm  
4 x steering wheels (all with break)

**Suitable VENTA products**

Item No.: 15061\_single\_bowl\_GASTROS\_V4\_STAGE\_80

Item No.: 11099\_INDUCION\_HEATER\_GASTROS\_V4

**Warranty**

1 year

**Loaded trolley**

[LxWxH]: 820 x 790 x 1579 mm (full)  
Trolley for 16 x metal housing & induction unit (max. load)  
weight (empty): 70 kg  
weight (full): 238 kg

**Example (shown in schematic figure below)**

Trolley for 16 x 11099\_INDUCION\_HEATER\_GASTROS\_V4  
and 16 x 15061\_single\_bowl\_GASTROS\_V4\_STAGE\_80

