

STAGE – the modular buffet system



base frame: steel, powder-coated
color: anthracite (100)

table-top: compact laminate
color: ceramic anthracite (402)

SIDEBLIND_STAGE_80
material: compact laminate
color: ceramic anthracite (402)

FRONTBLIND_STAGE_S
material: compact laminate
color: ceramic anthracite (402)



color example 100|402|402|402

Item No.: 86008

[LxWxH]: 1800 x 800 x 1095 mm
total weight: 90,3 kg

Table STAGE_50_M (1 x)

Item No.: 51003

[LxWxH]: 1800 x 500 x 855 - 1095 mm
total weight: 37,5 kg

Table STAGE_80_S_ELEMENTS_2 (1 x)

Item No.: 20102

[LxWxH]: 1600 x 800 x 775 - 1015 mm
total weight: 39,1 kg

FRONTBLIND_STAGE_S (1 x)

Item No.: 38046

[LxWxH]: 1600 x 822 x 17 mm
total weight: 5,3 kg

SIDEBLIND_STAGE_80 (2 x)

Item No.: 38048

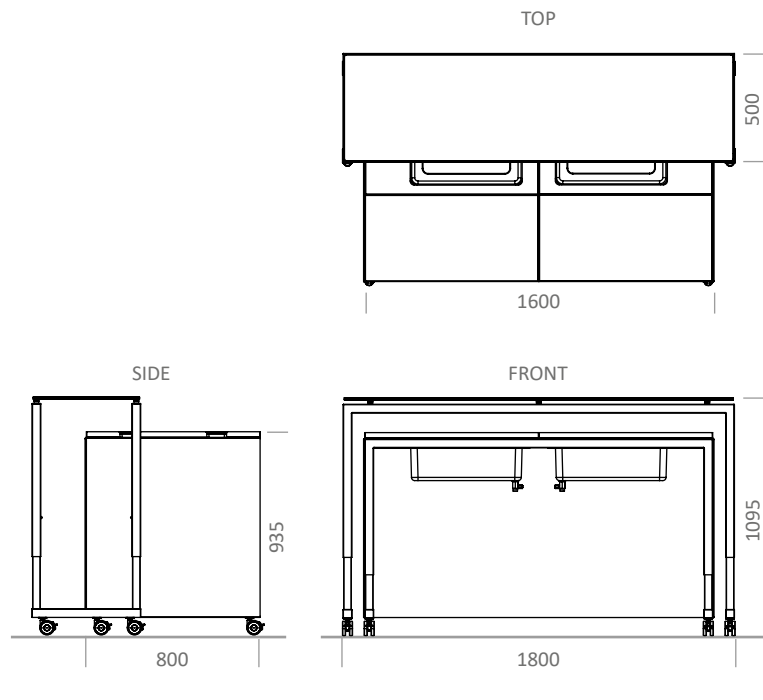
[LxWxH]: 800 x 822 x 17 mm
total weight: 2,7 kg

Additional VENTA products included

- 2 x 20007_table-frame_STAGE_80_ELEMENTS
- 2 x 20012_COMPACT_TOP_ELEMENTS
- 2 x 20017_ICE_WELL_ELEMENTS
- 2 x 20019_COMPACT_TOP_ELEMENTS_1_1_GN_CUTOUT

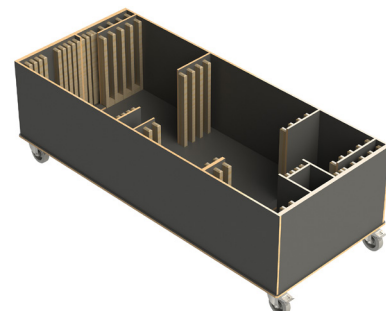
Warranty

1 year



Item No.: 99147

Trolley for 2 x MOBILE_BAR
(max. load)



weight:
70 kg [empty]
250,6 kg [full]