

STAGE – The modular buffet system



base frame: steel, powder-coated  
color: anthracite (100)

table-top: compact laminate  
color: ceramic anthracite (402)

SIDEBLIND\_STAGE\_80  
material: compact laminate  
color: ceramic anthracite (402)

FRONTBLIND\_STAGE\_S  
material: compact laminate  
color: ceramic anthracite (402)

color example 100|402|402|402



**Item No.: 86006**

[LxWxH]: 1800 x 800 x 1095 mm  
total weight: 81,7 kg

**Table STAGE\_50\_M (1 x)**

**Item No.: 51003**

[LxWxH]: 1800 x 500 x 855 - 1095 mm  
total weight: 37,5 kg

**Table STAGE\_80\_S\_ELEMENTS\_2 (1 x)**

**Item No.: 20102**

[LxWxH]: 1600 x 800 x 775 - 1015 mm  
total weight: 39,1 kg

**FRONTBLIND\_STAGE\_S (1 x)**

**Item No.: 38046**

[LxWxH]: 1600 x 822 x 17 mm  
total weight: 5,3 kg

**SIDEBLIND\_STAGE\_80 (2 x)**

**Item No.: 38048**

[LxWxH]: 800 x 822 x 17 mm  
total weight: 2,7 kg

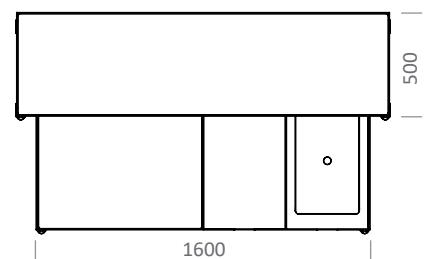
**Additional VENTA products included**

- 1 x 14018\_table-top\_STAGE\_80\_XS
- 1 x 20007\_table-frame\_STAGE\_80\_ELEMENTS
- 1 x 20012\_COMPACT\_TOP\_ELEMENTS
- 1 x 20017\_ICE\_WELL\_ELEMENTS
- 1 x 20019\_COMPACT\_TOP\_ELEMENTS\_1\_1\_GN\_CUTOUT

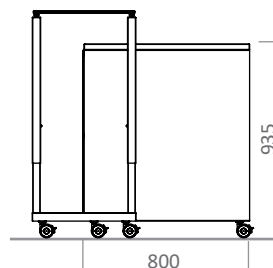
**Warranty**

1 year

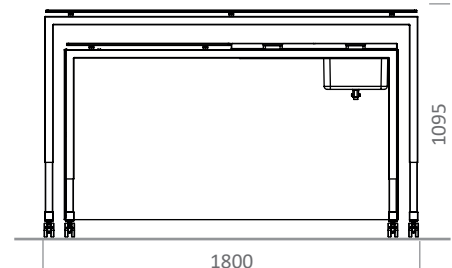
TOP



SIDE

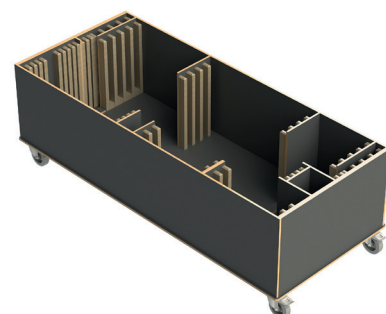


FRONT



**Item No.: 99147**

Trolley for 2 x MOBILE\_BAR  
(max. load)



weight:  
70 kg [empty]  
233,4 kg [full]