

STAGE – the modular buffet system



color example 100|402

Item No.: 81004

[LxWxH]: 800 x 800 x 775 mm
 total weight: 28,5 kg (glass)
 total weight: 22,5 kg (compact laminate)

Base

material: steel, powder-coated
 profile: 40 x 40 mm
 weight: 13,3 kg with height compensation
 4 x castor, diameter = 65 mm
 height adjustable: 855, 935, 1015 mm

Table-top

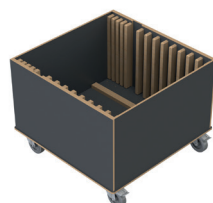
[LxWxH]: 790 x 790 x 10 mm
 material: compact laminate (8,8 kg),
 or safety glass 10 mm (15 kg)

Warranty

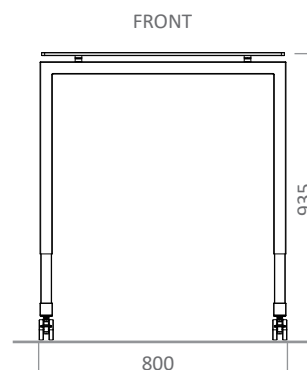
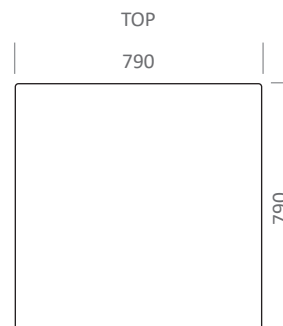
1 year

Item No.: 99114

Trolley for 4 x STAGE_80_XS
 (max. load)



weight:
 48 kg [empty]
 191,2 kg [full]



connection between table-top and base

