

STAGE – the modular buffet system



color example 100|402

Item No.: 81003

[LxWxH]: 1800 x 800 x 855 mm
total weight: 52 kg (glass)
total weight: 37,5 kg (compact laminate)

Base

material: steel, powder-coated
profile: 40 x 40 mm
weight: 17,3 kg with height compensation
4 x castor, diameter = 65 mm
height adjustable: 935, 1015, 1095 mm

Table-top

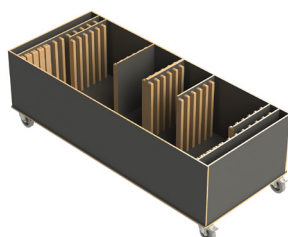
[LxWxH]: 1790 x 790 x 10 mm
material: compact laminate (19 kg),
or safety glass 10 mm (35 kg)

Warranty

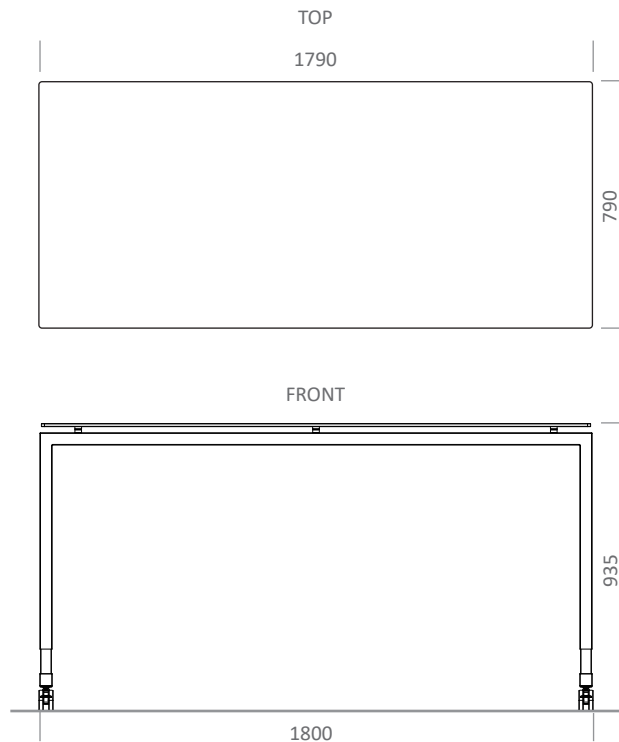
1 year

Item No.: 99109

Trolley for 4 x STAGE_80_M
(max. load)



weight:
75 kg [empty]
218,2 kg [full]



connection between table-top and base

