

STAGE – the modular buffet system



color example 100|402

Item No.: 81002

[LxWxH]: 1960 x 800 x 935 mm
total weight: 57 kg (glass)
total weight: 41,5 kg (compact laminate)

Base

material: steel, powder-coated
profile: 40 x 40 mm
weight: 18,3 kg with height compensation
4 x castor, diameter = 65 mm
height adjustable: 1015, 1095, 1175 mm

Table-top

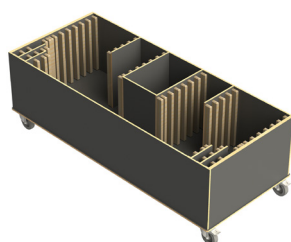
[LxWxH]: 1950 x 790 x 10 mm
material: compact laminate (21 kg),
or safety glass 10 mm (38 kg)

Warranty

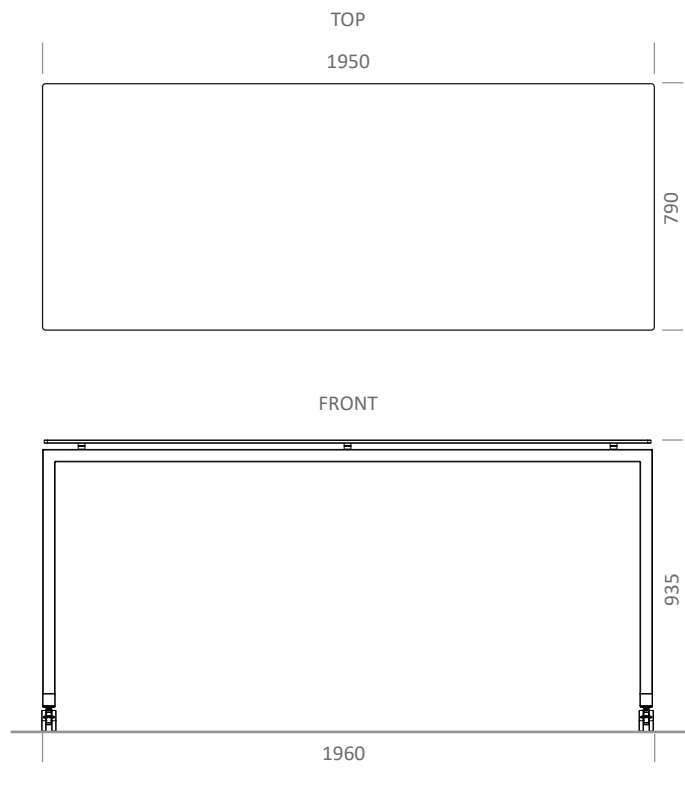
1 year

Item No.: 99107

Trolley for 4 x STAGE_80_L
(max. load)



weight:
75 kg [empty]
232,2 kg [full]



connection between table-top and base

