

STAGE – the modular buffet system



color example 100|402

Item No.: 51017

[LxWxH]: 1640 x 500 x 775 mm
total weight: 36 kg (glass)
total weight: 28 kg (compact laminate)

Base

material: steel, powder-coated
profile: 40 x 40 mm
weight: 16,6 kg with height compensation
4 x castor, diameter = 65 mm
height adjustable: 855, 935, 1015 mm

Table-top

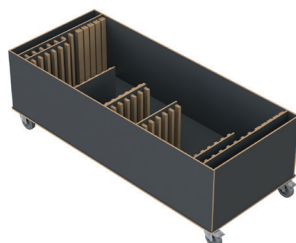
[LxWxH]: 1630 x 490 x 10 mm
material: compact laminate (12 kg),
or safety glass 10 mm (20 kg)

Warranty

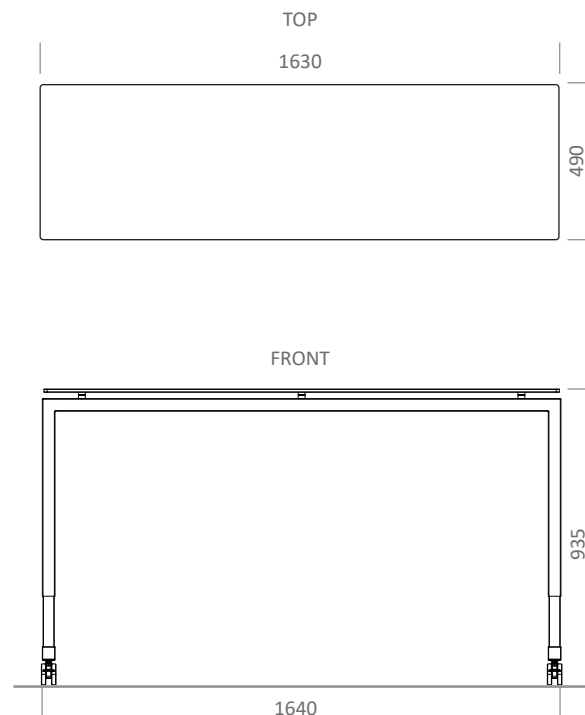
1 year

Item No.: 99123

Trolley for 4 x STAGE_50_S_164
(max. load)



weight:
72 kg [empty]
178 kg [full]



connection between table-top and base

