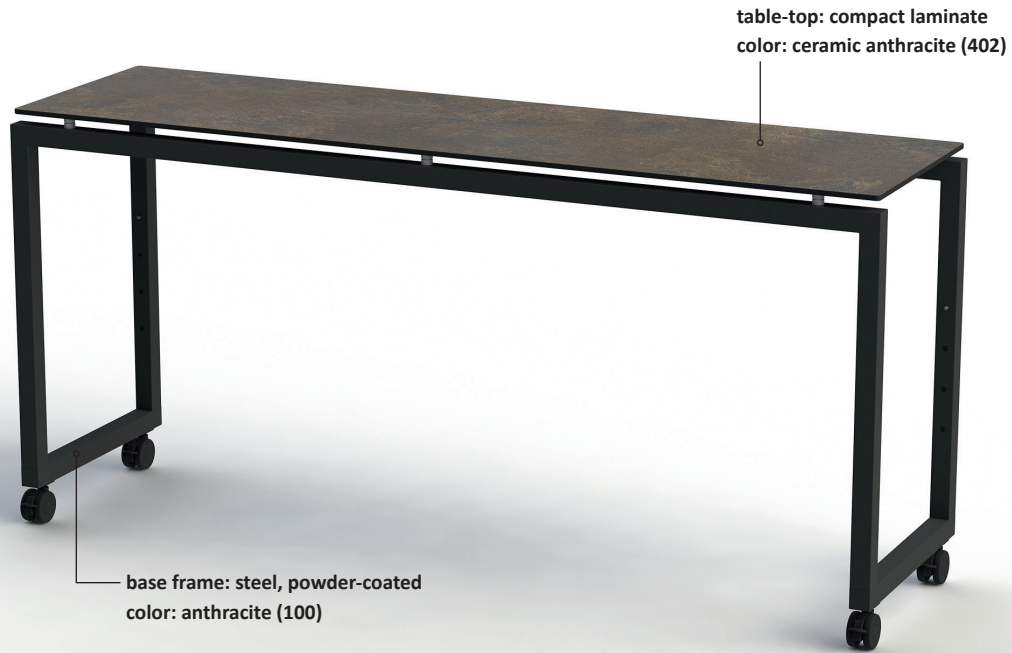


STAGE – the modular buffet system



color example 100|402

Item No.: 51003

[LxWxH]: 1800 x 500 x 855 mm
 total weight: 37,5 kg (glass)
 total weight: 28,5 kg (compact laminate)

Base

material: steel, powder-coated
 profile: 40 x 40 mm
 weight: 15,6 kg with height compensation
 4 x castor, diameter = 65 mm
 height adjustable: 935, 1015, 1095 mm

Table-top

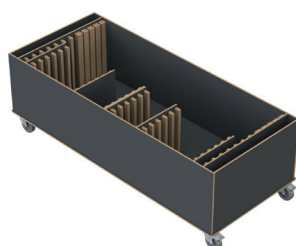
[LxWxH]: 1790 x 490 x 10 mm
 material: compact laminate (13 kg),
 or safety glass 10 mm (22 kg)

Warranty

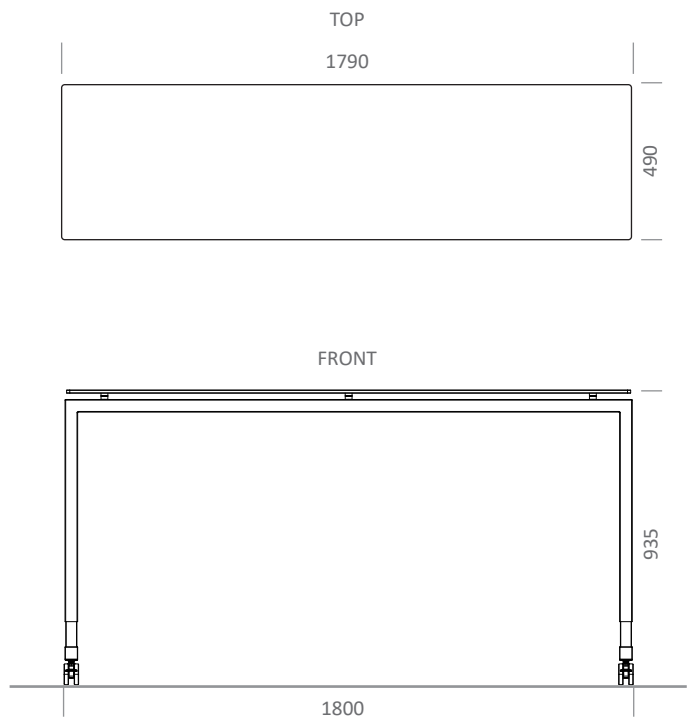
1 year

Item No.: 99109

Trolley for 4 x STAGE_50_M
 (max. load)



weight:
 75 kg [empty]
 191,4 kg [full]



connection between table-top and base

