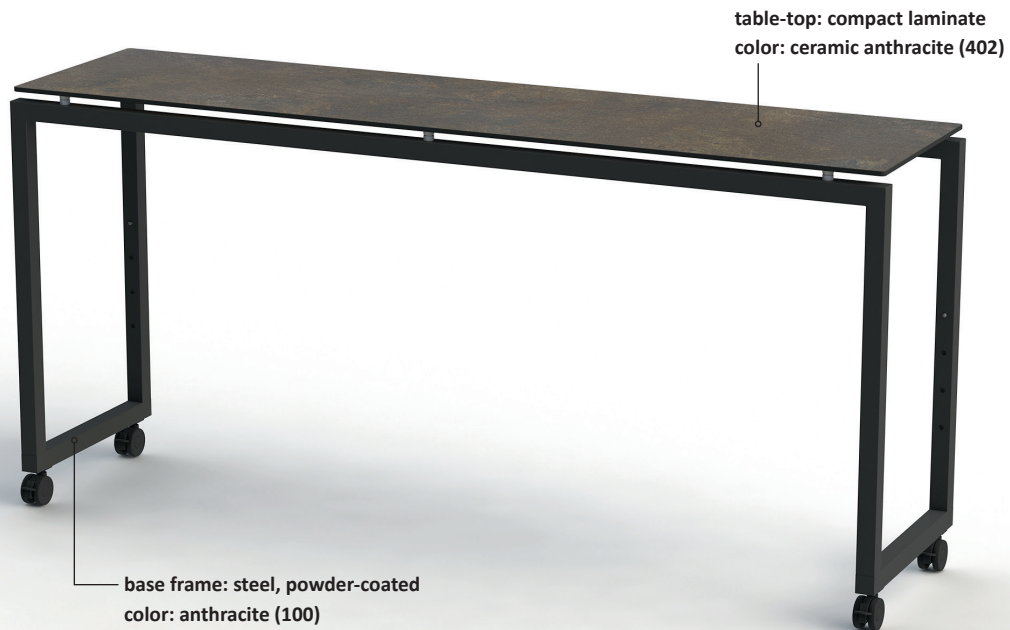


STAGE – the modular buffet system



color example 100|402

**Item No.: 51002**

[LxWxH]: 1960 x 500 x 935 mm  
 total weight: 42 kg (glass)  
 total weight: 32 kg (compact laminate)

**Base**

material: steel, powder-coated  
 profile: 40 x 40 mm  
 weight: 16,6 kg with height compensation  
 4 x castor, diameter = 65 mm  
 height adjustable: 1015, 1095, 1175 mm

**Table-top**

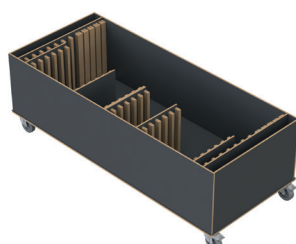
[LxWxH]: 1950 x 490 x 10 mm  
 material: compact laminate (15 kg),  
 or safety glass 10 mm (24 kg)

**Warranty**

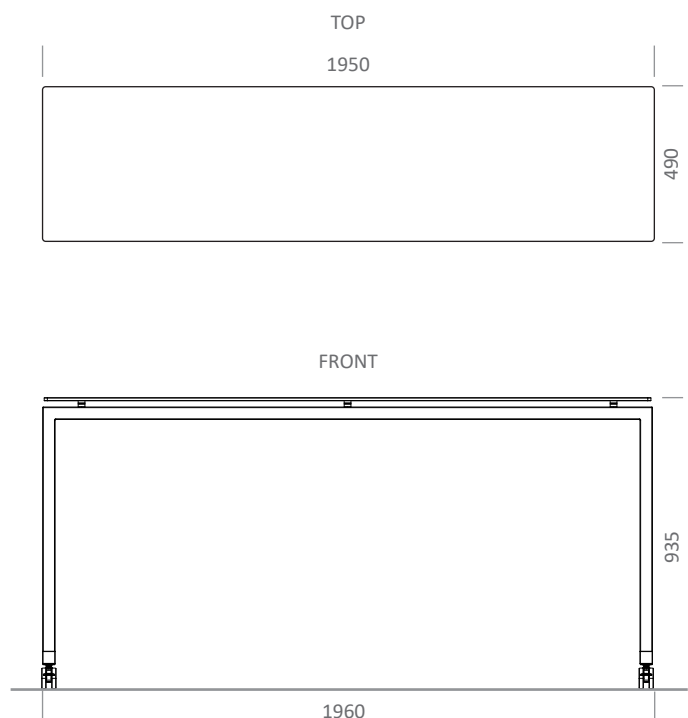
1 year

**Item No.: 99109**

Trolley for 4 x STAGE\_50\_L  
 (max. load)



weight:  
 75 kg [empty]  
 203,4 kg [full]



**connection between table-top and base**

