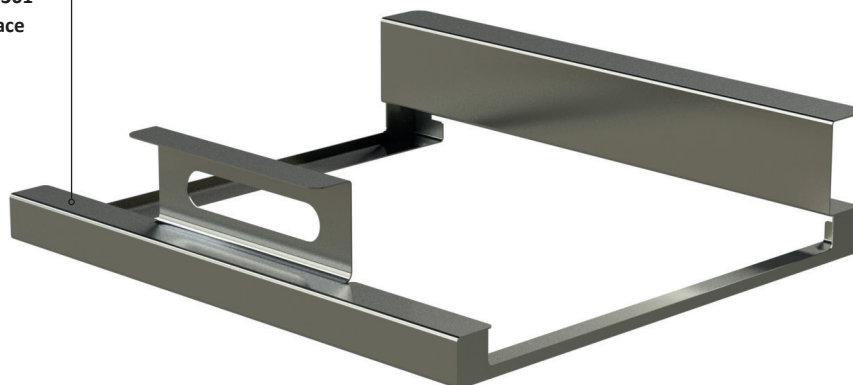


Metal housing to accommodate a GGM_3,5 kW cooking induction
for table_frame_STAGE_80_ELEMENTS and table-frame_STAINLESS_STAGE_50_ELE.



stainless steel Aisi 1.4301
brilliant brushed surface



Item No.: 20021

[LxWxH]: 420 x 382 x 95 mm

total weight: 1,25 kg

Material

material: stainless steel Aisi 1.4301

surface: brilliant brushed

Suitable VENTA products

Item No.: 20007_table-frame_STAGE_80_ELEMENTS

Item No.: 20008_table-frame_STAINLESS_STAGE_50_ELE.

Construction

manufacturer: VENTA by Büchin Design

single-part form

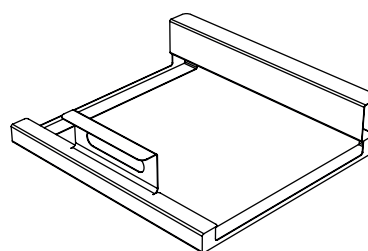
Classification

DIN EN 1008-3 | DIN EN 631

approved for the food industry

Warranty

1 year

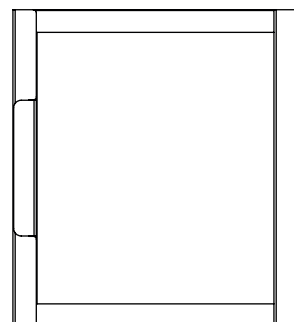


SIDE

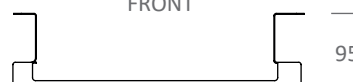


420

TOP



FRONT



95

382