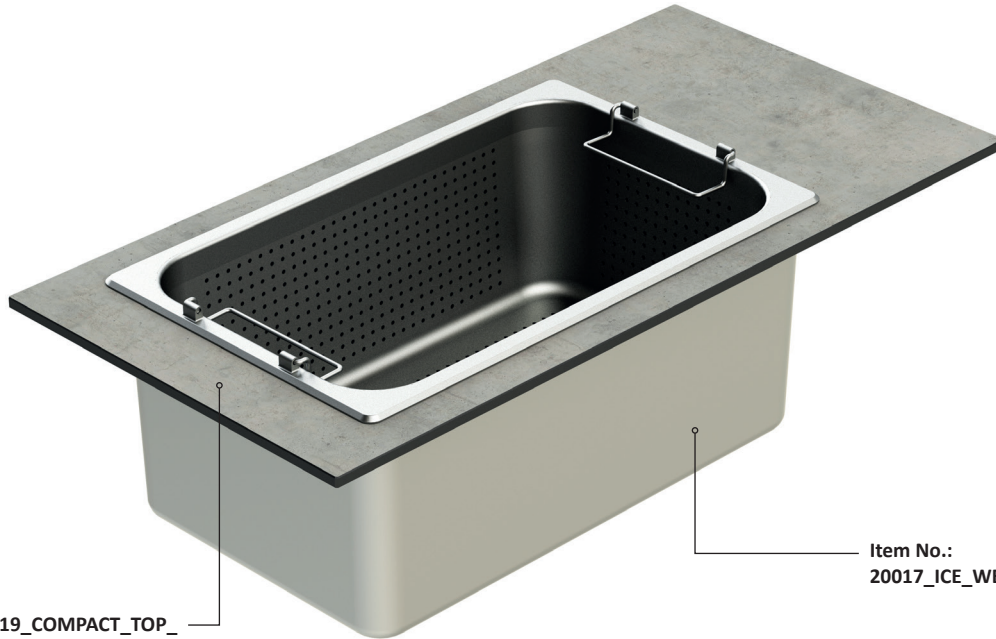


Stainless steel 1/1 GN ICE WELL SET

Item No.: 20019_COMPACT_TOP_ELEMENTS_1_1_GN_CUTOUT
or
Item No.: 20014_STAINLESS_TOP_ELEMENTS_1_1_GN_CUTOUT

Item No.:
20017_ICE_WELL_ELEMENTS

Item No.: 20038

total weight: 4,9 kg

Suitable VENTA products

Item No.: 14130_inlay_panel_ICE_WELL_ELEMENTS

Item No.: 12309_GN_1_1_perforated_RIEBER

Item No.: 20014_STAINLESS_TOP_ELEMENTS_1_1_GN_CUTOUT

Item No.: 20017_ICE_WELL_ELEMENTS

Item No.: 20019_COMPACT_TOP_ELEMENTS_1_1_GN_CUTOUT

ICE-WELL ELEMENTS

manufacturer: RIEBER[®] for VENTA

Perforated container

manufacturer: RIEBER[®]

Classification

DIN EN 1008-3 | DIN EN 631
approved for the food industry

Warranty

1 year

NECESSARY EQUIPMENT**Item No.: 20014**

[LxWxH]: 796 x 396 x 10 mm

total weight: 4,7 kg

material: stainless steel Aisi 1.4301

surface: brilliant brushed

classification: DIN EN 1008-3

Item No.: 20019

[LxWxH]: 796 x 396 x 10 mm

total weight: 2,2 kg

material: 10mm compact laminate,

classification:

DIN EN 13501-1 _B-s1, d0;

DIN EN 438-4;

DIN EN 438-7 Flammex Euroclass B

Set contains following individual parts:



Item No.: 14130
inlay_panel_
ICE_WELL_ELEMENTS



Item No.: 12309
1 x RIEBER®
perforated container 1/1 GN,
200 mm
stainless steel Aisi 1.4301
brilliant brushed surface



Item No.: 20017
1 x ICE_WELL ELEMENTS
by VENTA
stainless steel Aisi 1.4301
brilliant brushed surface



1 x ball valve 1/2 inch
brass with galvanized
surface

Necessary equipment:

Item No.: 20014_STAINLESS_TOP_ELEMENTS_1/1_GN_CUTOUT
stainless steel Aisi 1.4301

or

Item No.: 20019_COMPACT_TOP_ELEMENTS_1_1_GN_CUTOUT
compact laminate board 10 mm

