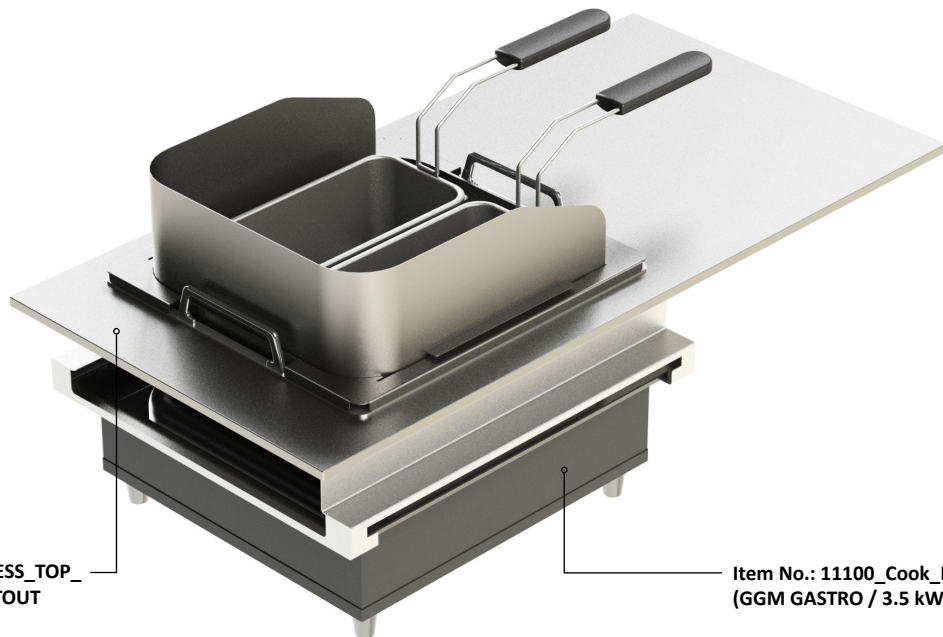


Stainless steel 2/3 GN frying set

Item No.: 20033_STAINLESS_TOP_ELEMENTS_2_3_GN_CUTOUT

Item No.: 11100_Cook_Induction (GGM GASTRO / 3.5 kW)

Item No.: 20023

total weight: 15 kg

Suitable VENTA products

Item No.: 11100_Cook_Induction (GGM GASTRO / 3.5 kW)

Item No.: 12317_GN_1_3_Frying_Basket_RIEBER

Item No.: 12319_Frying-Top

Item No.: 12324_Splash_Guard_Frying_Top

Item No.: 12326_Thermoplate_handles_2_3_GN_100_RIEBER

Item No.: 12327_cooker_lid_2_3_GN_with_handle_recess_RIEBER

Item No.: 20021_metal_housing_3,5kW_COOK_INDUCTION

Item No.: 20033_STAINLESS_TOP_ELEMENTS_2_3_GN_CUTOUT

frying top frame

manufacturer: VENTA® by Büchin Design

deep frying baskets

manufacturer: RIEBER®

Classification

DIN EN 1008-3 | DIN EN 631

approved for the food industry

Induction unit

manufacturer: GGMGastro®

Warranty

1 year

NECESSARY EQUIPMENT**Item No.: 11100**

power: 3500 W

waterproof: IPX3

voltage: 220-240 V | 50 Hz

current: 16 A

remote control: wired

Item No.: 20033

stainless steel Aisi 1.4301

brilliant brushed surface

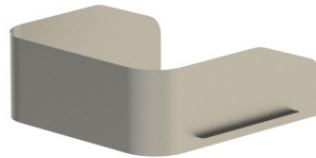


Set contains following individual parts:

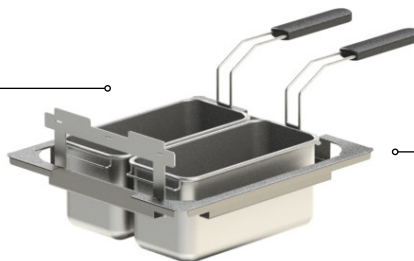
Item No.: 12327
 1x RIEBER®
 lid 2/3GN with handle
 stainless steel Aisi 1.4301
 brilliant brushed surface



Item No.: 12324
 1x splash guard
 by VENTA®
 stainless steel Aisi 1.4301
 brilliant brushed surface



Item No.: 12317
 2x RIEBER®
 deep frying baskets 1/3 GN
 stainless steel Aisi 1.4301
 brilliant brushed surface



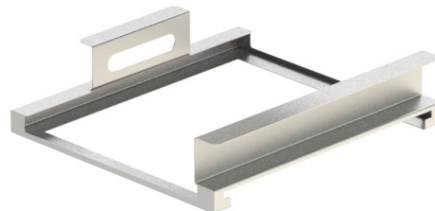
Item No.: 12319
 frying top frame 2/3 GN
 by VENTA®
 stainless steel Aisi 1.4301
 brilliant brushed surface



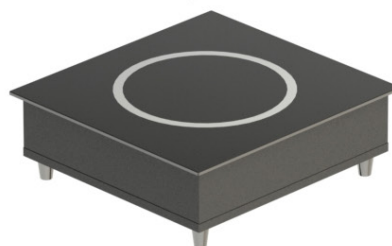
Item No.: 12326
 1x RIEBER®
 THERMOPLATE 100
 2/3 GN with handles
 nano brushed surface
 stainless steel Aisi 1.4301
 brilliant brushed surface



Item No.: 20021
 1x metal housing for GGM
 COOK INDUCTION 3,5 kW
 by VENTA®
 stainless steel Aisi 1.4301
 brilliant brushed surface



Item No.: 11100
 1x GGM COOK INDUCTION®
 3,5 kW
 stainless steel Aisi 1.4301
 brilliant brushed surface



Item No.: 11773
 1x metal housing for GGM
 COOK INDUCTION® remote
 stainless steel Aisi 1.4301
 brilliant brushed surface



Necessary equipment:
 Item No.: 20033_1x STAINLESS_
 TOP_ELEMENTS_2/3_GN_CUTOUT
 stainless steel Aisi 1.4301
 brilliant brushed surface

