

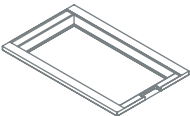
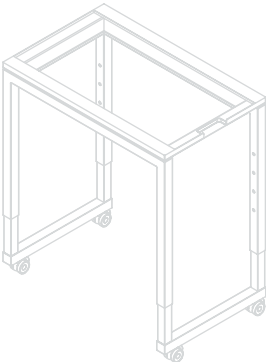


17.01.2022

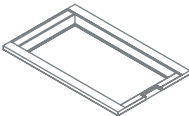
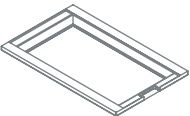
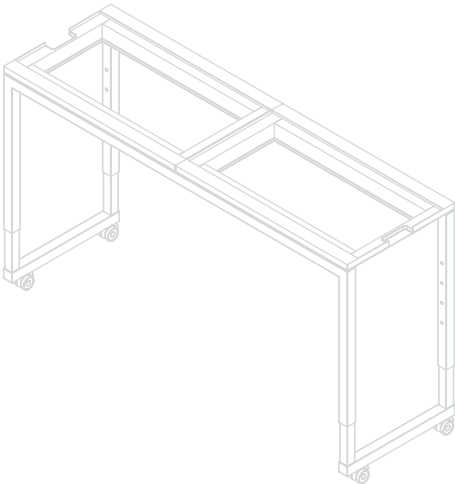




STAGE_50_XS

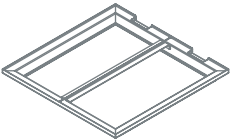
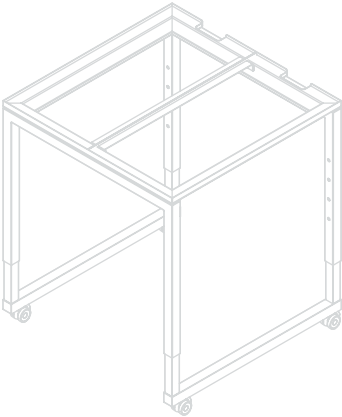


STAGE_50_S

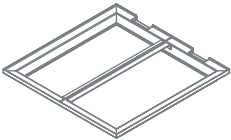
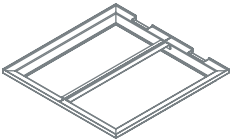
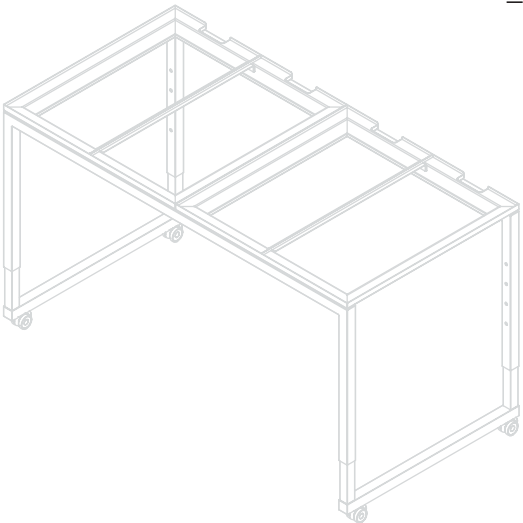


SYSTEM SIZES

STAGE_80_XS

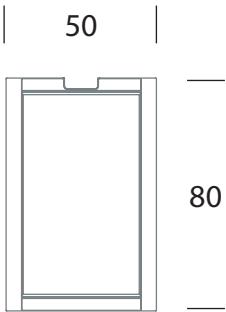
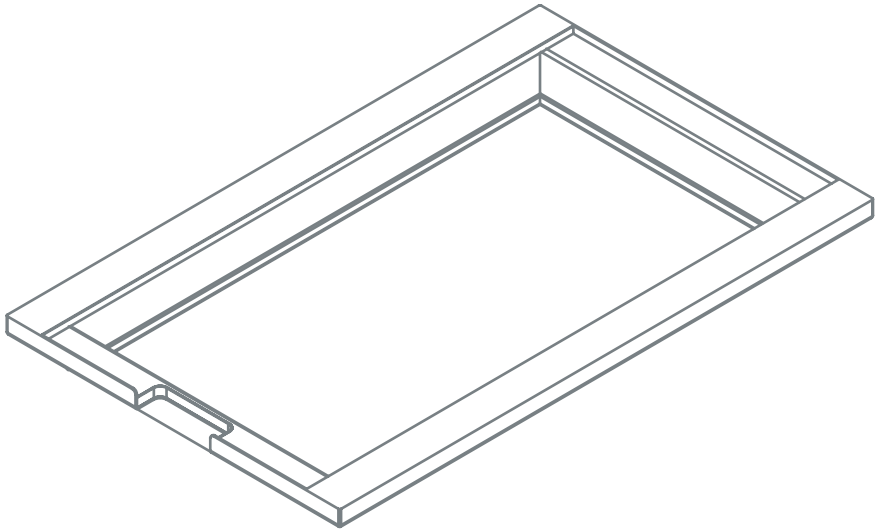


STAGE_80_S

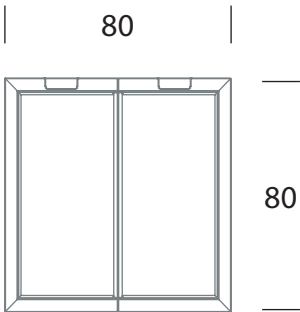
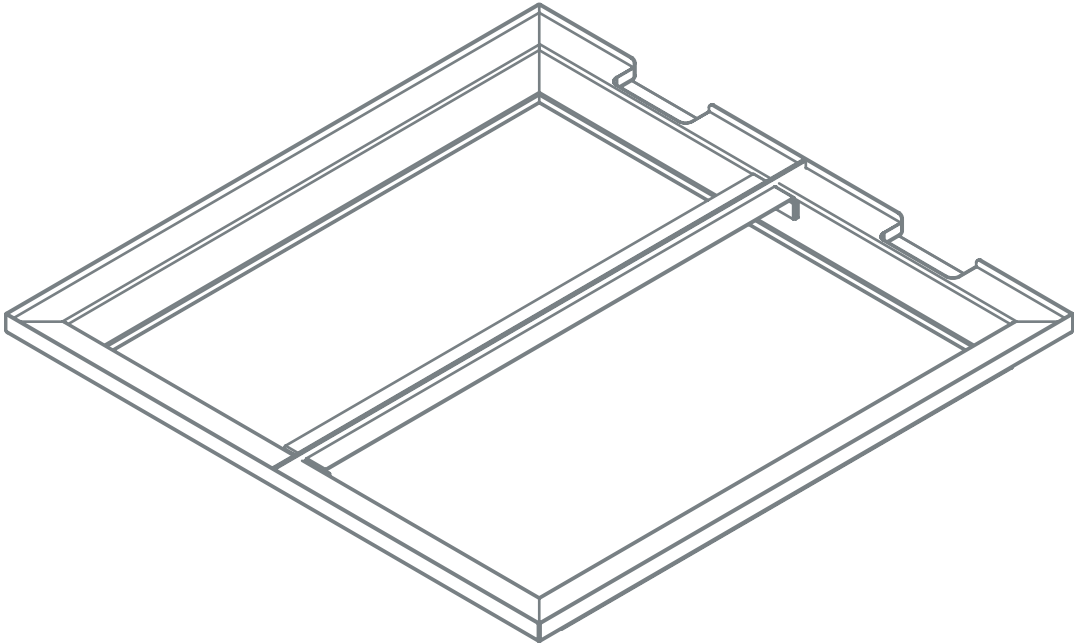




table_frame_STAGE_50_ELEMENTS



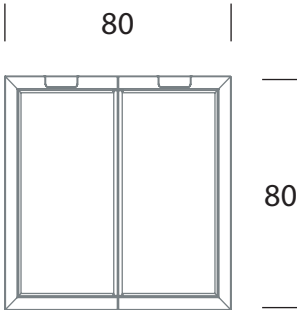
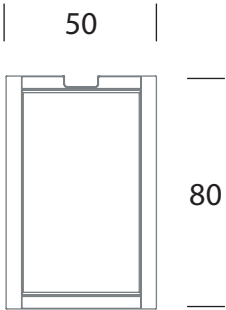
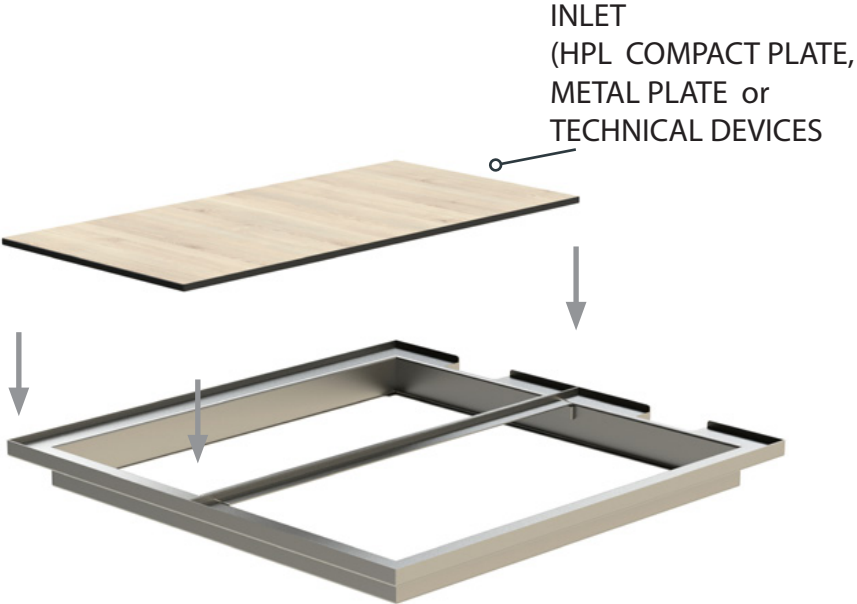
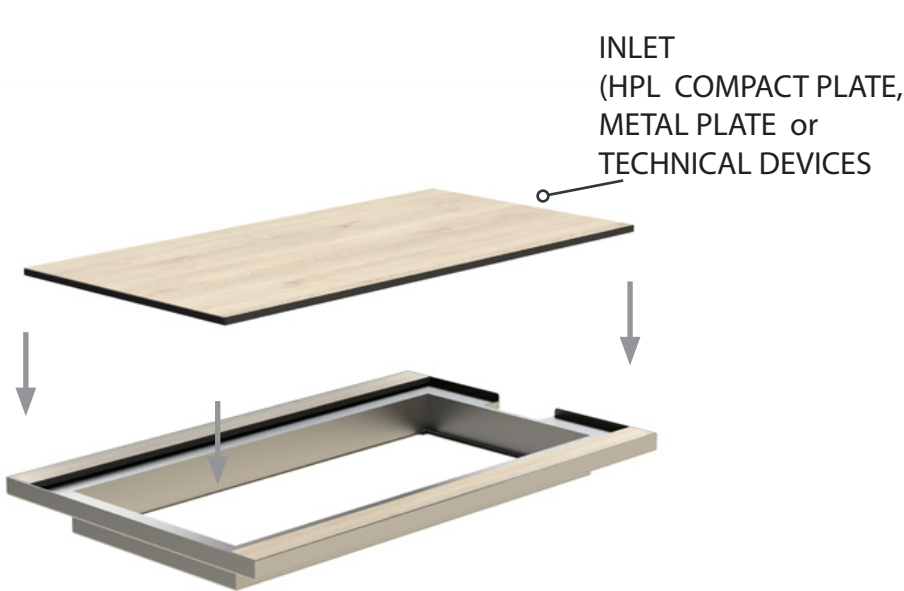
table_frame_STAGE_80_ELEMENTS



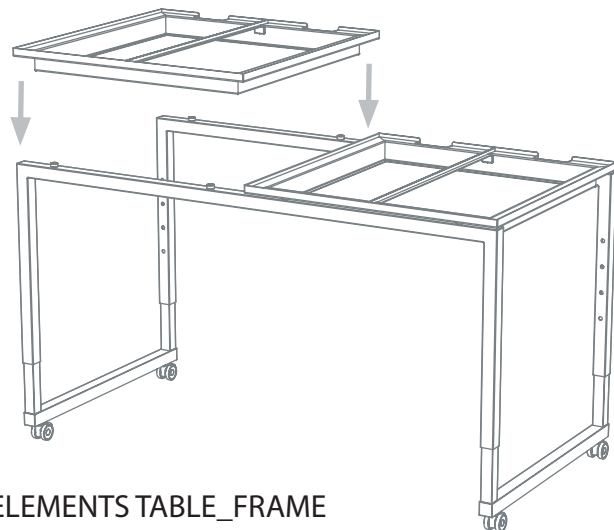


table_frame_STAGE_50_ELEMENTS

table_frame_STAGE_80_ELEMENTS

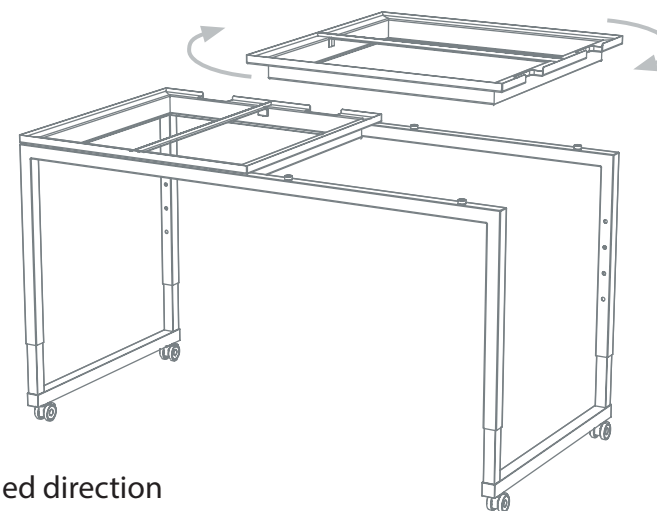


1.



place the ELEMENTS TABLE_FRAME
on the base

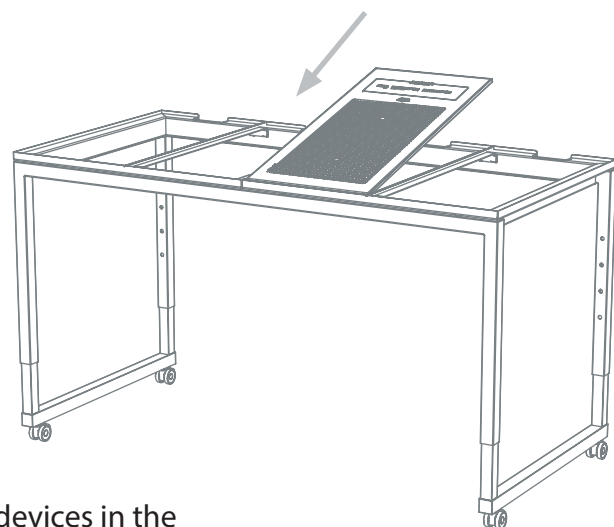
2.



choose the needed direction
on the table base

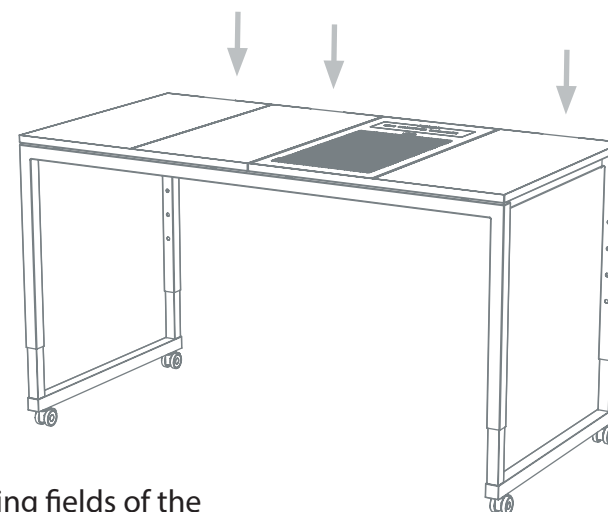
INSTALLATION

3.



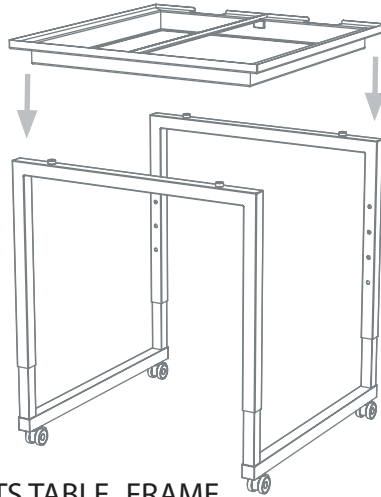
insert the devices in the
ELEMENTS TABLE_FRAME

4.



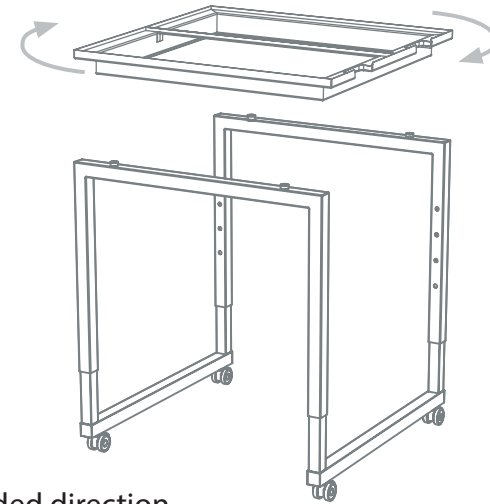
fill in the remaining fields of the
ELEMENTS TABLE_FRAME

1.



place the ELEMENTS TABLE_FRAME
on the base

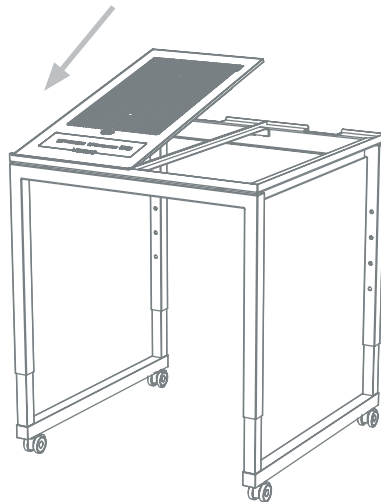
2.



choose the needed direction
on the table base

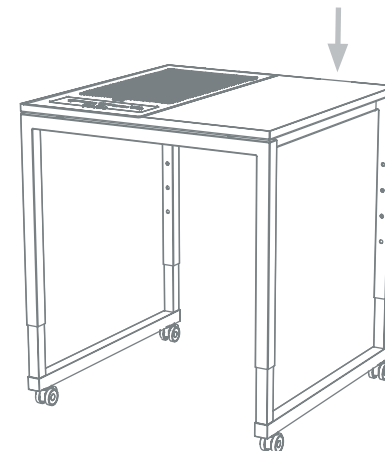
INSTALLATION

3.



insert the devices in the
ELEMENTS TABLE_FRAME

4.



fill in the remaining fields of the
ELEMENTS TABLE_FRAME

ELECTRICAL SELECTION for TECHNICAL EQUIPMENT

Please select the appropriate components according to the electrical situation in your property.

400 V
Three-phase electric power

OR

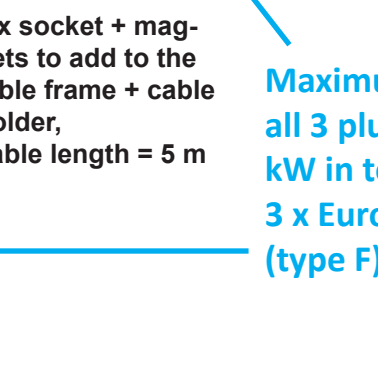
230 V
Single-phase electric power



Maximum voltage per double plug 3,6 kW.
All 6 plugs maximum 10,8 kW in total.
6 x European Socket (type F),
cable length = 5 m



>>> available plug types:
F (EU) / G (UK) / J (CH) / I (AU) / M (IN)



3 x socket + magnets to add to the table frame, cable length = 5 m

3 x socket + magnets to add to the table frame + cable holder, cable length = 5 m

Special plug bar version for UAE and Qatar
only available with plug type: G (UK)

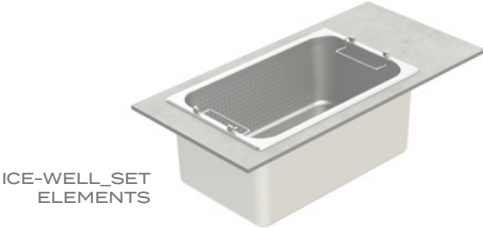
plugbar with overvoltage protection (6.5kA + mains and frequency filter for 2 x EU safety plug (type F, 230V~50Hz), cable: 5,0 m, H07RN-F 3G1,50mm², plastic housing, color: black, plug: UK 13A 230V, rated current, maximum power: 1 x 13A / 3200 W

Maximum voltage all 3 plugs maximum 3,5 kW in total.
3 x European Socket (type F)

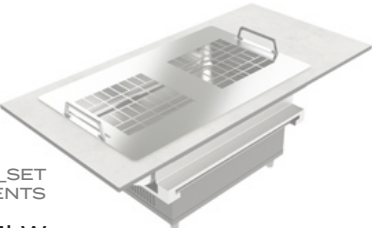
for BUFFET

various inserts

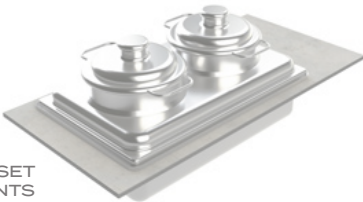
for FRONT COOKING



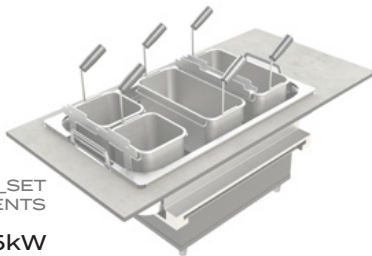
ICE-WELL_SET
ELEMENTS



DIM-SUM_SET
ELEMENTS
3,5kW



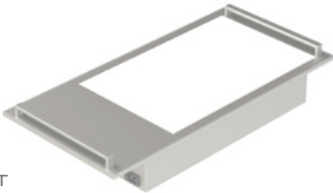
SOUP_SET
ELEMENTS
0,8kW



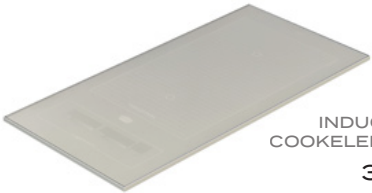
PASTA_SET
ELEMENTS
3,5kW

figure shows additional equipment

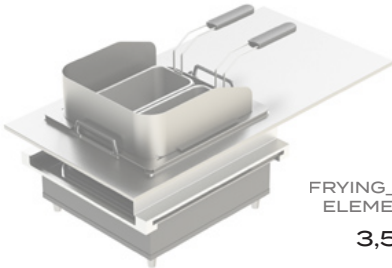
When choosing a device,
please note the
electrical situation in your property.



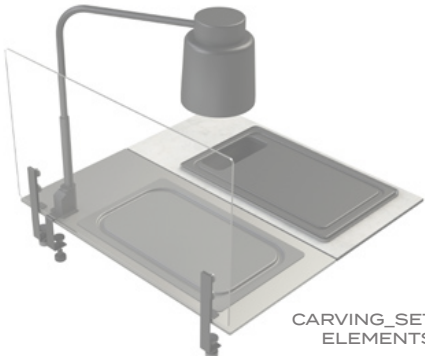
COOL+HOT
ELEMENTS
3,5kW



INDUCTION-
COOKELEMENTS
3,7kW

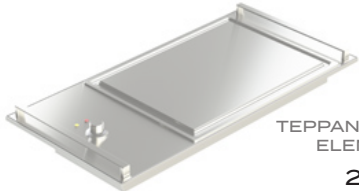


FRYING_SET
ELEMENTS
3,5kW

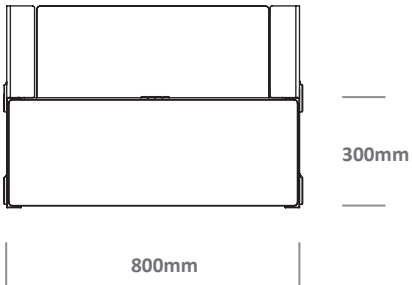


0,8kW heating plate
0,2kW heating lamp

CARVING_SET
ELEMENTS



TEPPAN-GRILL
ELEMENTS
2,0kW



position
AIRMOBIL_80



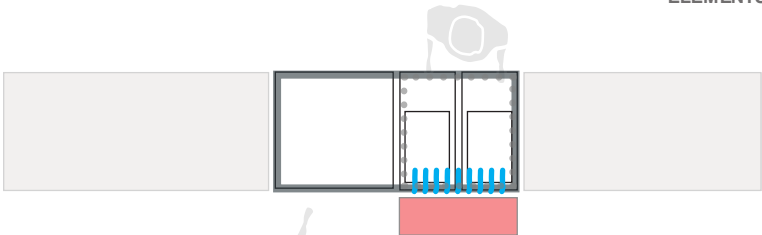
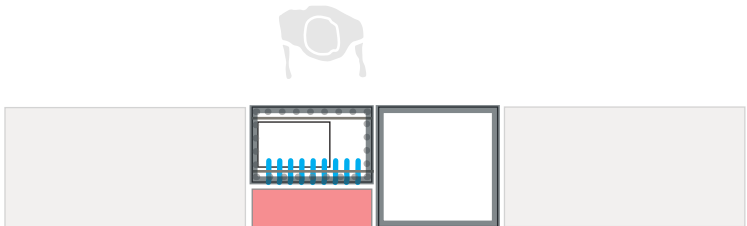
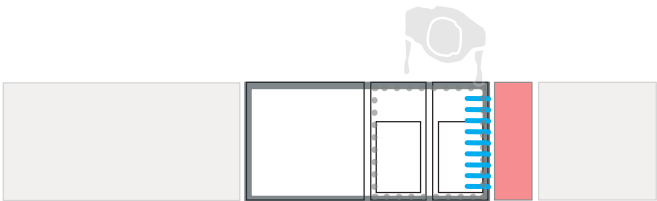
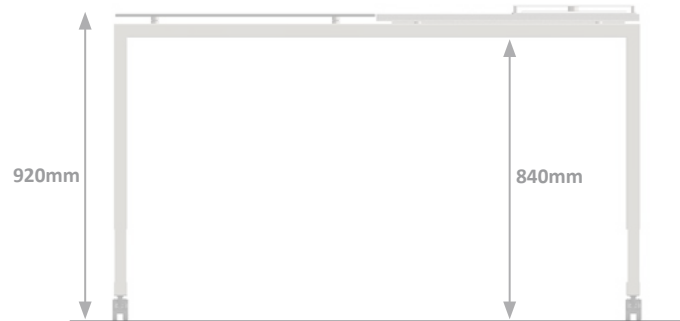
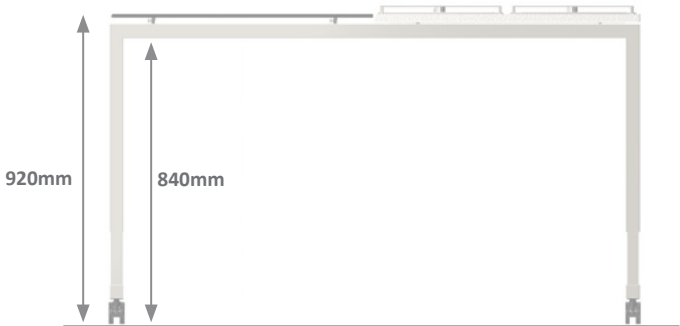


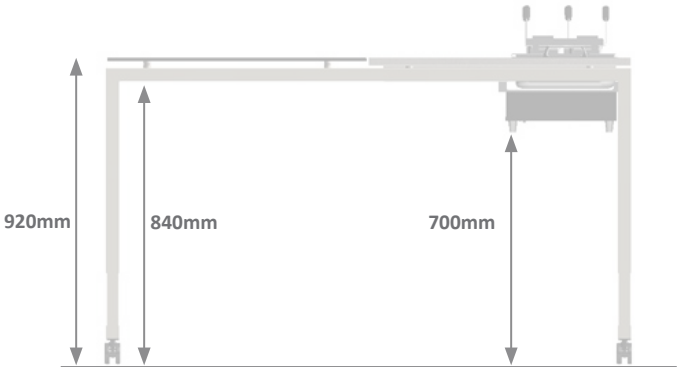
TABLE SIZE for LARGE ROOMS



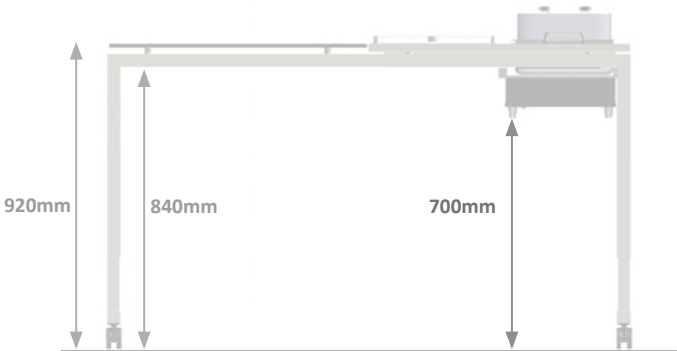
COOKING



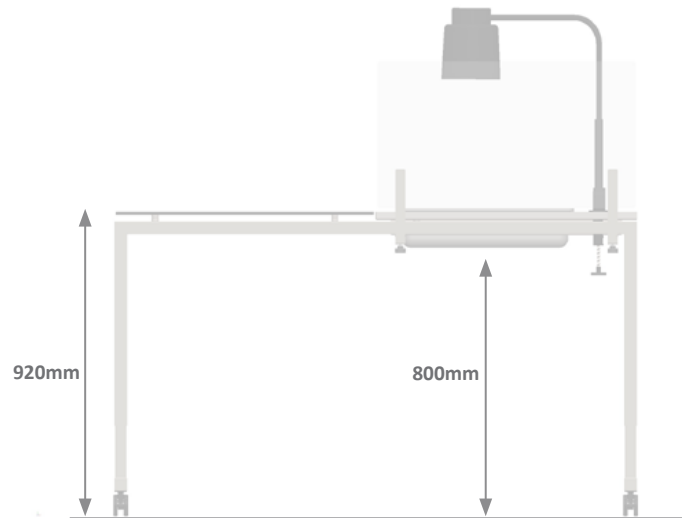
WESTERN GRILL



PASTA



FRYING



CARVING

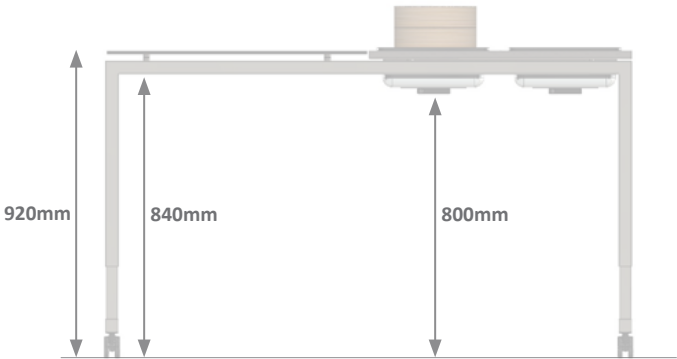
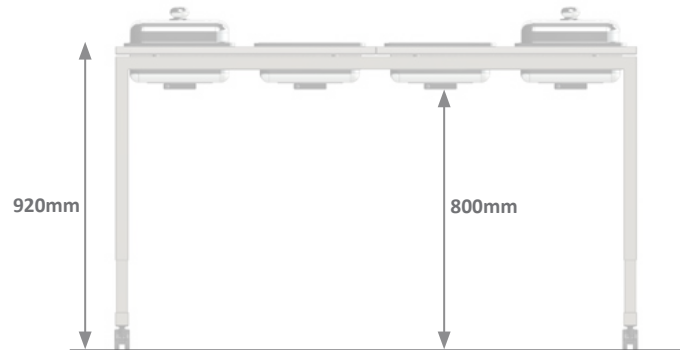
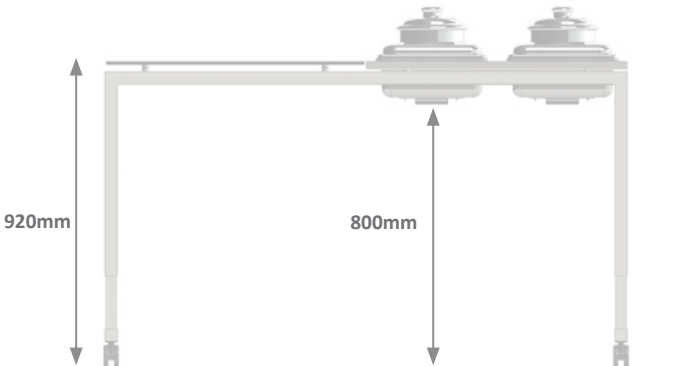


figure shows additional equipment

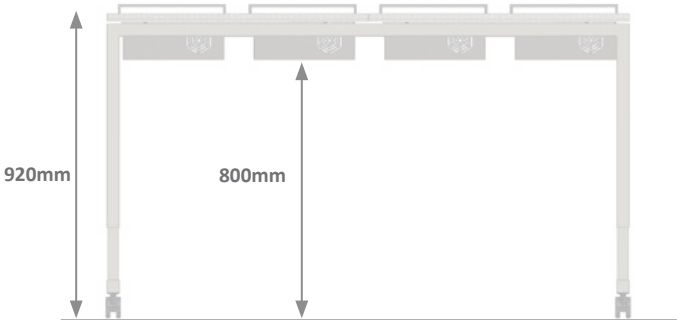
DIM SUM



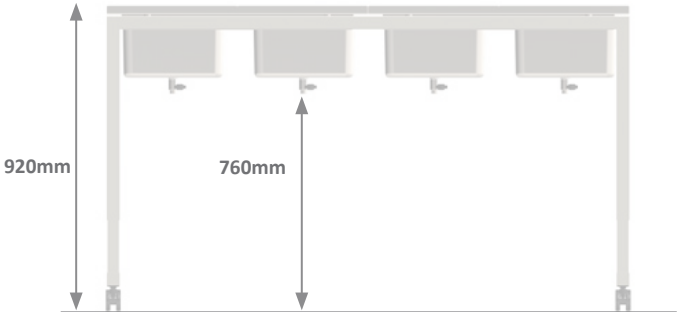
CHAFING DISH



SOUP



COLD (active)



COLD (passive)

TABLE SIZE for SMALL ROOMS



COOKING



WESTERN GRILL



PASTA



FRYING



CARVING



figure shows additional equipment

DIM SUM



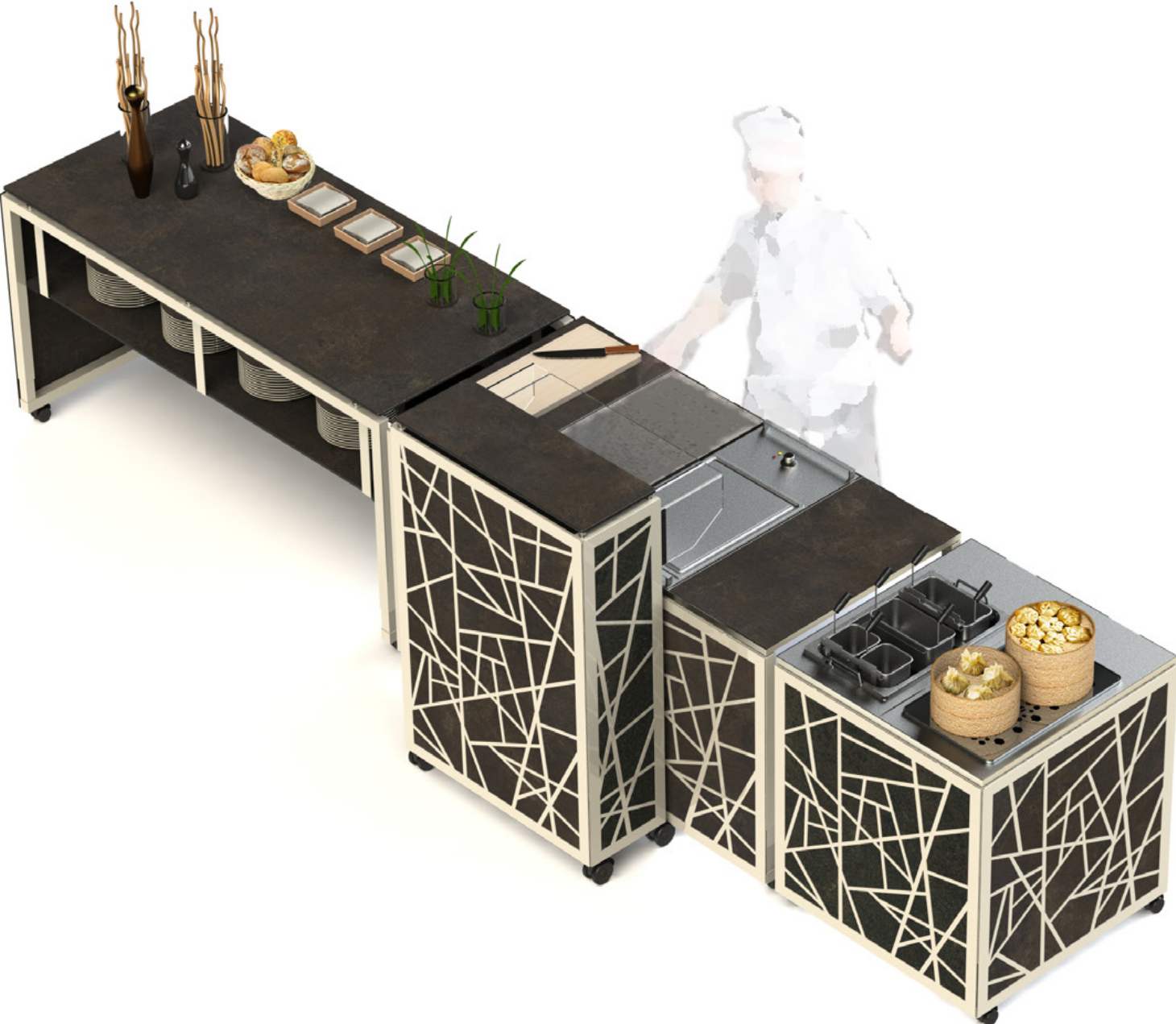
SOUP



COLD (active)



COLD (passive)



www.ventadesign.com

ideas | design | products since 1969