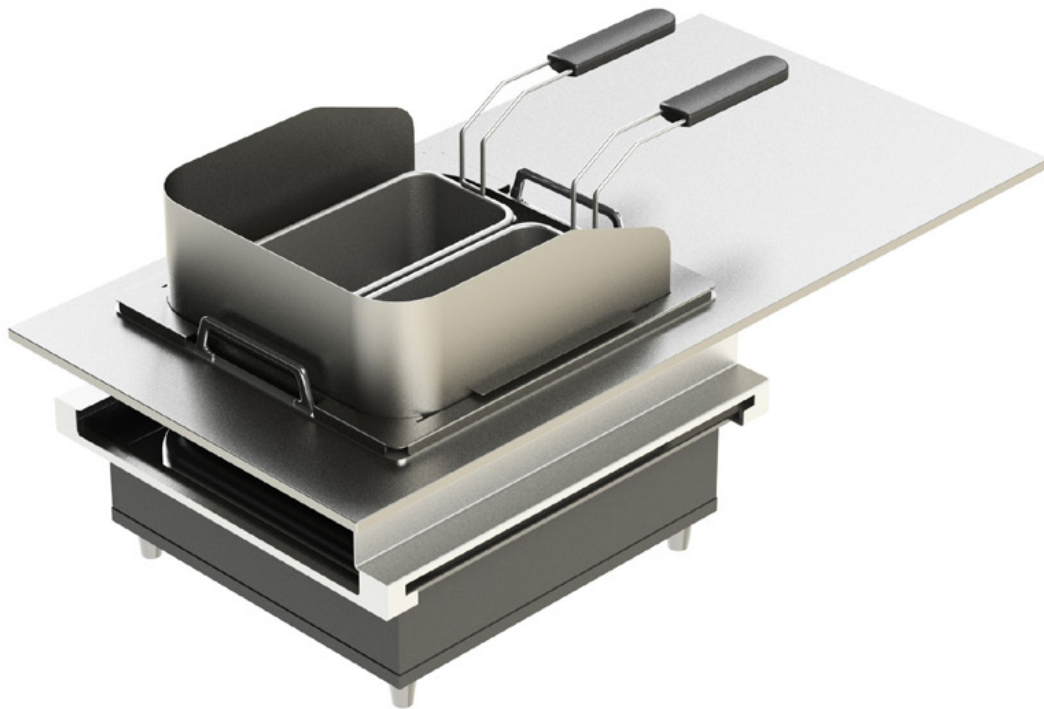


STAINLESS_steel 2/3 GN FRYING SET

Item No.: 20023

Item No.: 20023

total weight: 15,0 kg

Item No.: 11100

Induction unit

Power: 3,5 kW

Waterproof: IPX3

Voltage: 220-240V /50Hz

Current: 16A

Item No.: 11100

wired remote control

Construction:**frying top frame:**

manufacturer: VENTA® by Büchin Design

deep frying baskets:

manufacturer: RIEBER®

frying top frame:

manufacturer: VENTA® by Büchin Design

Classification: DIN EN 1008-3 | DIN EN 631

approved for the food industry

Induction unit:

manufacturer: GGMGastro®

Warranty: 1 year

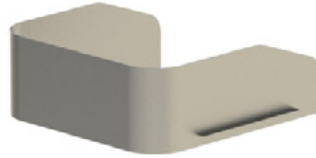


set contains following individual parts:

1x RIEBER®
lid 2/3GN with handle
Stainless steel Aisi 1.4301
brilliant brushed surface
Item No.: 12327



1x splash guard
by VENTA®
Stainless steel Aisi 1.4301
brilliant brushed surface
Item No.: 12324



2x RIEBER®
deep frying baskets 1/3GN
Stainless steel Aisi 1.4301
brilliant brushed surface
Item No.: 12318

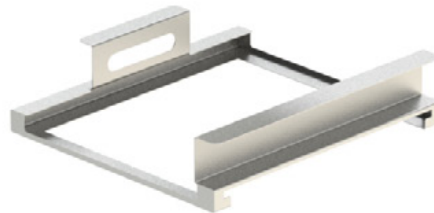


frying top frame 2/3GN
by VENTA®
Stainless steel Aisi 1.4301
brilliant brushed surface
Item No.: 12318

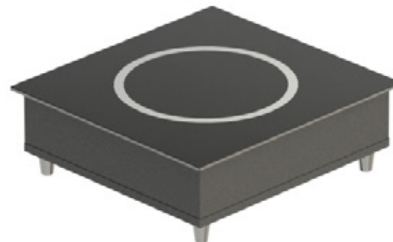
1x RIEBER®
THERMOPLATE 100
2/3GN with handles
nano brushed surface
Item No.: 12314



1x Metal housing for GGM
COOK INDUCTION 3,5kW
by VENTA®
Stainless steel Aisi 1.4301
brilliant brushed surface
Item No.: 20021



1x GGM COOK
INDUCTION 3,5 kW
Item No.: 11100



1x Metal housing for GGM
COOK INDUCTION® remote
Stainless steel Aisi 1.4301
brilliant brushed surface
Item No.: 11773



necessary equipment

1x STAINLESS_TOP_ELEMENTS_
2/3_GN_CUTOUT
Stainless steel Aisi 1.4301
brilliant brushed surface
Item No.: 20033

