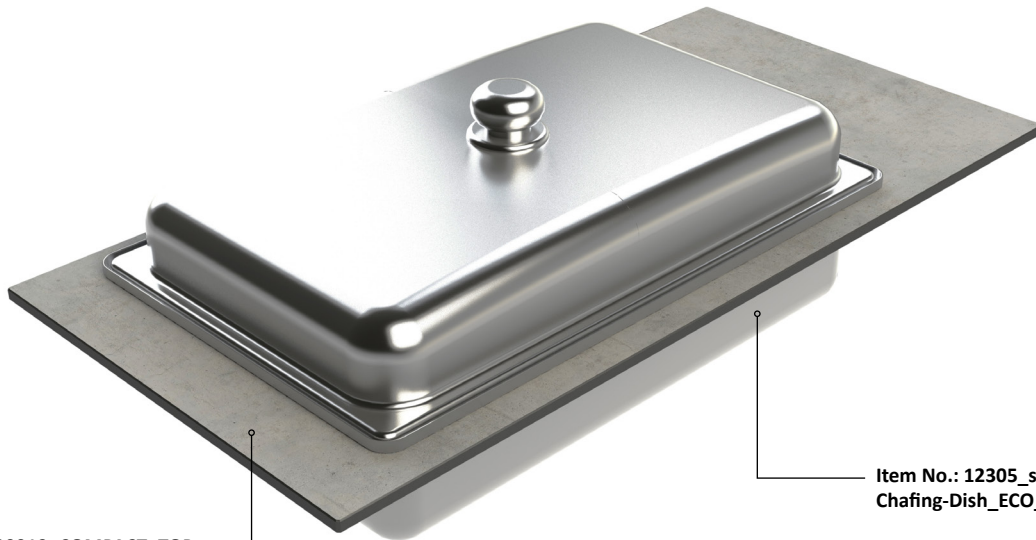


Stainless steel 1/1 GN Chafing-Dish-Set



Item No.: 20019_COMPACT_TOP_ELEMENTS_1_1_GN_CUTOUT
or
Item No.: 20014_STAINLESS_TOP_ELEMENTS_1_1_GN_CUTOUT

Item No.: 12305_soup_station_Chafing-Dish_ECO_SPRING

Item No.: 20028

total weight: 4,39 kg

Suitable VENTA products

Item No.: 11762_magnetic_holder

Item No.: 12301_electric_heating_unit_SPRING

Item No.: 12305_soup_station_Chafing-Dish_ECO_SPRING

Item No.: 20014_STAINLESS_TOP_ELEMENTS_1_1_GN_CUTOUT

Item No.: 20019_COMPACT_TOP_ELEMENTS_1_1_GN_CUTOUT

Built-in chafing dish ECO SPRING

manufacturer: SPRING®

Classification

DIN EN 1008-3 | DIN EN 631

approved for the food industry

Warranty

1 year

NECESSARY EQUIPMENT**Item No.: 12301**

Electric heating element SPRING®

Power: 800 W

Voltage: 220 - 240 V / 50 Hz

Current: 16 A

remote control: wired

Item No.: 20014

[LxWxH]: 796 x 396 x 10 mm

total weight: 3,6 kg

material: stainless steel Aisi 1.4301

surface: brilliant brushed

classification: DIN EN 1008-3

or

Item No.: 20019

[LxWxH]: 796 x 396 x 10 mm

total weight: 2,2 kg

material: 10 mm compact laminate,
classification:

DIN EN 13501-1_B-s1, d0;

DIN EN 438-4;

DIN EN 438-7 Flammex Euroclass B

Set contains following individual parts:



Item No.: 12300
 1 x SPRING
 Chafing-Dish-Set
 ECO SPRING
 1/1 GN
 stainless steel Aisi 1.4301
 brilliant brushed surface

Item No.: 12301
 1 x electric heating
 element SPRING® 800 W
 stainless steel Aisi 1.4301
 brilliant brushed surface



Item No.: 11762
 1 x Magnetic holder
 for remote SPRING®
 heating element
 stainless steel Aisi 1.4301
 brilliant brushed surface

Necessary equipment:

Item No.: 20014_STAINLESS_TOP_ELEMENTS_1/1_GN_CUTOUT
 stainless steel Aisi 1.4301
 or
 Item No.: 20019_COMPACT_TOP_ELEMENTS_1_1_GN_CUTOUT
 compact laminate board 10 mm

