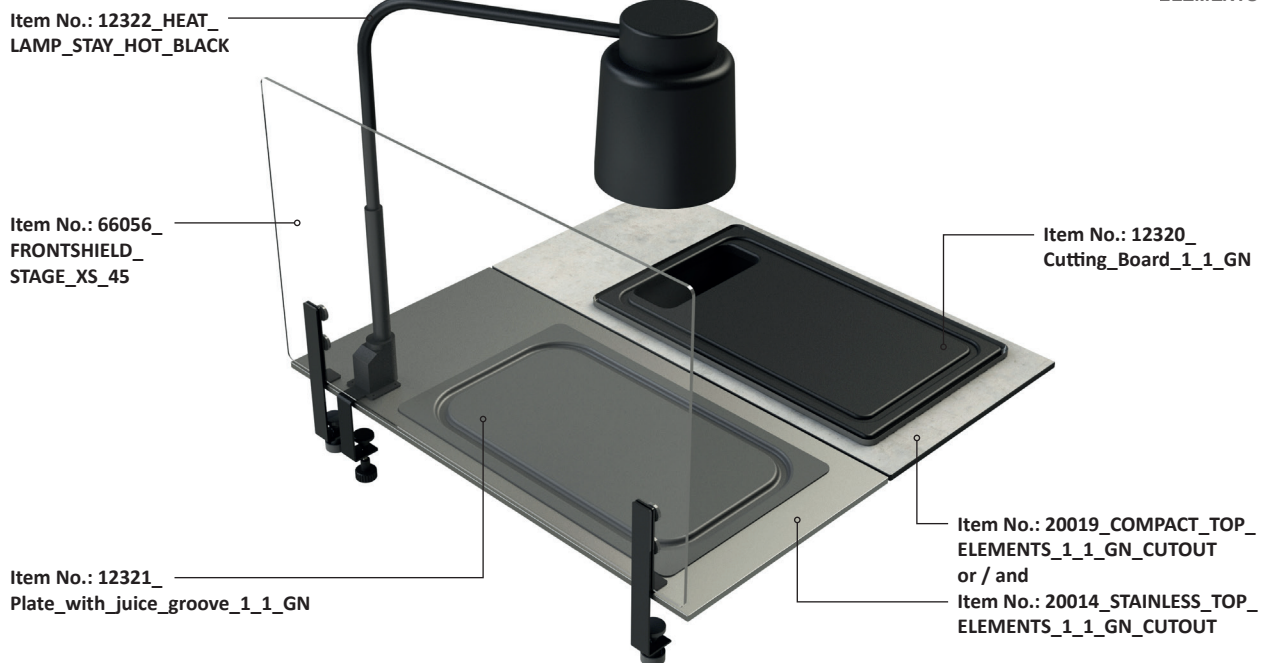


2/1 GN carving set**Item No.: 20024**

total weight: 11,9 kg

Suitable VENTA products

Item No.: 11762_magnetic_holder

Item No.: 12302_insert_stainless_steel_1_1_SPRING

Item No.: 12320_Cutting_Board_1_1_GN

Item No.: 12321_Plate_with_juice_groove_1_1_GN

Item No.: 12322_HEAT_LAMP_STAY_HOT_BLACK

Item No.: 12323_electric_heating_unit_500_WATT_SPRING

Item No.: 20014_STAINLESS_TOP_ELEMENTS_1_1_GN_CUTOUT

Item No.: 20019_COMPACT_TOP_ELEMENTS_1_1_GN_CUTOUT

Item No.: 66056_FRONTSHIELD_STAGE_XS_45

Heatlamp

manufacturer: STAYHOT®

GN container 1/1

manufacturer: SPRING®

1/1 GN juice groove plate

manufacturer: VENTA

1/1 GN cutting board

manufacturer: VENTA

FRONTSHIELD_STAGE_XS_45

manufacturer: VENTA

Warranty

1 year

NECESSARY EQUIPMENT**Item No.: 12323**

Electric heating element SPRING®

Power: 500 W

Voltage: 220-240 V / 50 Hz

Current: 16 A

remote control: wired

Item No.: 20014

[LxWxH]: 796 x 396 x 10 mm

total weight: 3,6 kg

material: stainless steel Aisi 1.4301

surface: brilliant brushed

classification: DIN EN 1008-3

or / and

Item No.: 20019

[LxWxH]: 796 x 396 x 10 mm

total weight: 2,2 kg

material: 10 mm compact laminate,
classification:

DIN EN 13501-1_B-s1, d0;

DIN EN 438-4;

DIN EN 438-7 Flammex Euroclass B

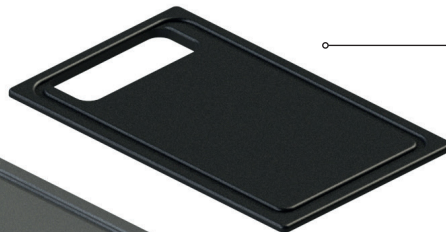
Set contains following individual parts:



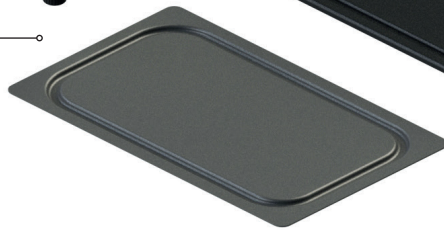
Item No.: 12322
1x HEATLAMP by STAYHOT®
black matt surface



Item No.: 12320
1x cutting board 1/1 GN
black



Item No.: 12321
1x juice groove plate 1/1 GN
aluminium, anthracite
powder coated surface



Item No.: 12323
1x electric heating element
SPRING® 500 W
stainless steel Aisi 1.4301
brilliant brushed surface



Item No.: 12302
1x container 1/1 GN
stainless steel Aisi 1.4301
brilliant brushed surface



Item No.: 66056
1x FRONTSHIELD_STAGE_
XS_45 by VENTA
stainless steel Aisi 1.4301
brilliant brushed surface



Item No.: 11762
1x magnetic holder
for remote SPRING®
heating element
stainless steel Aisi 1.4301
brilliant brushed surface



Necessary equipment:

Item No.: 20014_STAINLESS_TOP_
ELEMENTS_1/1_GN_CUTOUT
stainless steel Aisi 1.4301

or

Item No.: 20019_COMPACT_TOP_
ELEMENTS_1_1_GN_CUTOUT
compact laminate board 10 mm

